



FlowCUT™

FlowCUT Software

Version 6

- 32-bit application requires Windows XP to run machine
- Simple and logical interface puts the operator in control
- Ability to cut parts that have features programmed in the Z-direction to cut material with variable thickness (if machine has a programmable Z-axis)
- Large entity program capacity with "look ahead" processing capability
 - Cut speed limitations on parts with numerous small entities eliminated in most applications
 - Automatic corner control settings to improve accuracy and speed
- Easy, quick, surface quality specification
 - User-controlled machinability index for material type and thickness
- Exclusive material cutting models assure high quality finished parts
 - Complete control function allows user the option of optimizing part production or part accuracy
- Speed capability for high speed water only cutting or thin material abrasivejet cutting in excess of 150 ipm (This feature utilizes the optional high speed PC controller card)
- Plate alignment function to compensate for plate rotation, angle or skew on cutting surface
- Kerf compensation with the ability to edit the offset path to perfect a complex part
- Displays real-time tool location, including both machine home and "floating" user home
- 0 to 125% feed rate override
- Array nesting with adjustable gap between parts
- Part preview displays and one click "Dry Run" option to test part programs
- Cost per part based on user-defined parameters
 - Part cycle time
 - Linear part length
- User-friendly recovery features include:
 - Restart a cut from any point on the path or nest
 - Automatically pierce all holes first at low pressure, then cut at high pressure for use during special piercing operations of brittle materials
- Powerful, custom macro functions available for special applications:
 - Control a lathe, drill, shuttle or clamps with digital inputs and outputs
- Automatic control of intensifier, dual pressure, and vacuum assist options
- Integral control of high-pressure pump, water, and abrasive controls (on multiple head machine, all are controlled at same time)
- Customize screen settings for specific user preferences
- Diagnostic screen allows easy system troubleshooting
- Further evolved and advanced cutting models for increased part quality and cutting productivity including speed control for lead-ins and lead-outs
- Supports tabbed parts from FlowPATH 6.0
- Supports common line, multiple head nesting and cut part avoidance from other FlowMaster modules
- Up to 10 user home positions
- Dynamically switch between languages while running the program, allowing multiple users to work in the language of their choice without having to shut the program down
- Customizable colors for background, grid, selection and highlight
- Dynamically change size of toolbar buttons between large and small toolbars
- Context sensitive tool tips and integrated users guide in the Help section

Notes:

- The PC that controls the waterjet machine may not be enabled for remote administration.
- For integrated systems only, this includes all UHP pump diagnostics, on screen pressure display, remote on/off, dual pressure set points.



FlowCUT Software

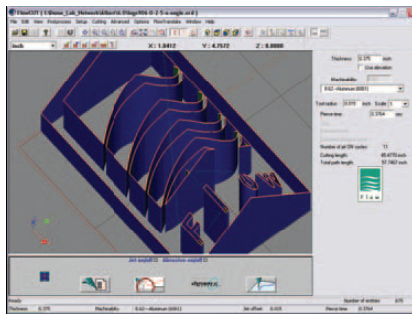
Version 6

Easier-to-Use

- Pan, Orbit, Zoom and Isometric, Top, Right & Front Views – viewing window supports the display of 3D parts drawn in FlowPATH 6.0
- Pan Orbit and Zoom allow the 3D object to be viewed at different angles and magnifications
- Isometric, Top, Right and Front Views allows easy visualization of part appearance and geometry
- Operation for 2D and 3D modes – FlowCUT 6.0 automatically determines if the machine can produce Z-Axis motion and will hide 3D tools if incapable of 3D motion
- Dynamic Language Change – automatically switch languages while running programs without restarting
- Dynamic Icons Size Change – switch between large and small toolbar buttons
- Context Sensitive Tooltips – every dialog has the '?' button which brings up information and tips for that dialog
- FlowCUT manual available through menu – open manual directly through FlowCUT
- Compatibility with PCI form factor PMAC card – eliminates future obsolescence of ISA slots in PC's
- VCR-like control for Part Preview – VCR-like control to control speed of preview with pause, reverse and fast forward for greater control
- Changing background, grid and selection colors – select custom colors based on preference

New Cutting Features

- Ability to run parts that have features programmed in the Z direction – motion program generators will produce motion in the Z-axis while determining the cutting speed; taper angles are also adjusted as the thickness changes
- Mode 1 – assumes material is of uniform thickness and cutting speed is determined by part thickness by assuming it matches the Z values programmed into the part
- Mode 2 – part thickness varies with automatic adjustment of cutting speed assuming thickness matches Z values programmed into the part
- Automatic assignment of Corner Control settings – assigns values based on thickness and material type; advanced settings can be saved for custom work in standard text files
- Improved Corner Control settings for inside and outside corners – recognizes difference between inside and outside corners, improving cycle time with easily definable speed profiles for acceleration and deceleration; advanced settings can be saved for custom work in standard text files
- Improved control for lead-ins and lead-outs – reduce marks on part left at lead locations automatically based on material type and thickness; customization available like above
- Improved performance for Sonic machines – new motion program assigns slower speeds to arcs if acceleration limits are exceeded and set all TA-times to 1 millisecond – eliminating previous issues
- Interface for part location device – dialog added to set up and control a laser crosshair or similar device allowing offset and calibration values
- Simplified Apply Model Dialog – one screen vs. three in 5.1; choose to use abrasive, model type, arc offset or not and use an oscillating pierce
- One click 'Dry Run' option – test part program without disabling controls
- Display 'Time on Part' – shown on Run Machine screen
- Automatically pierce all holes at low pressure and then cut at high pressure – improve productivity and ease of use



INNOVATION | EXPERTISE | COMMITMENT

Get It All with Flow

For over three decades, Flow has set the standard for excellence in waterjet technology. We are the only waterjet company in the world that offers total solutions and support from a single source, both before and after your waterjet system is installed. We learn your business requirements. We help you select and implement the right solution. We train your staff and we are there for you for the entire lifecycle of our products.

When you partner with Flow, you get more than a product:

Our **INNOVATION** ensures that you will always have the latest and highest quality technology.

Our **EXPERTISE** ensures that you will always have the right technology for your individual business needs.

Our **COMMITMENT** to customer service ensures that you will always receive the support you need to stay productive.

For your complimentary needs analysis or a product demonstration, please call one of our waterjet experts at **1-800-446-3569**.

We look forward to partnering with you in your success.

UNITED STATES, CANADA, MEXICO, CARIBBEAN,
AUSTRALIA, & NEW ZEALAND
Flow Waterjet Americas
23500 64th Avenue South, Kent, Washington 98032 USA
Tel: 253-850-3500 • Fax: 253-813-3285
TOLL-FREE: 800-446-3569 • info@flowcorp.com
www.flowcorp.com

CENTRAL AMERICA & SOUTH AMERICA
Flow Waterjet Americas • Tel: +55-11-3616-2822
flowlatino@flowlatino.com • www.flowlatino.com

EUROPE, MIDDLE EAST, & AFRICA
Flow Waterjet Europe • Tel: +49-7252-538-0
info@floweurope.com • www.floweurope.com

SOUTHEAST ASIA, KOREA, & CHINA
Flow Waterjet Asia • Tel: +886-3-577-2102
inquiry@flowasia.com.tw • www.flowasia.com

JAPAN
Flow Waterjet Asia • Tel: +81-52-701-7021
fjc@flowjapan.co.jp • www.flowjapan.co.jp

